



**BoysStuff.co.uk**  
serious fun



# OWNERS MANUAL



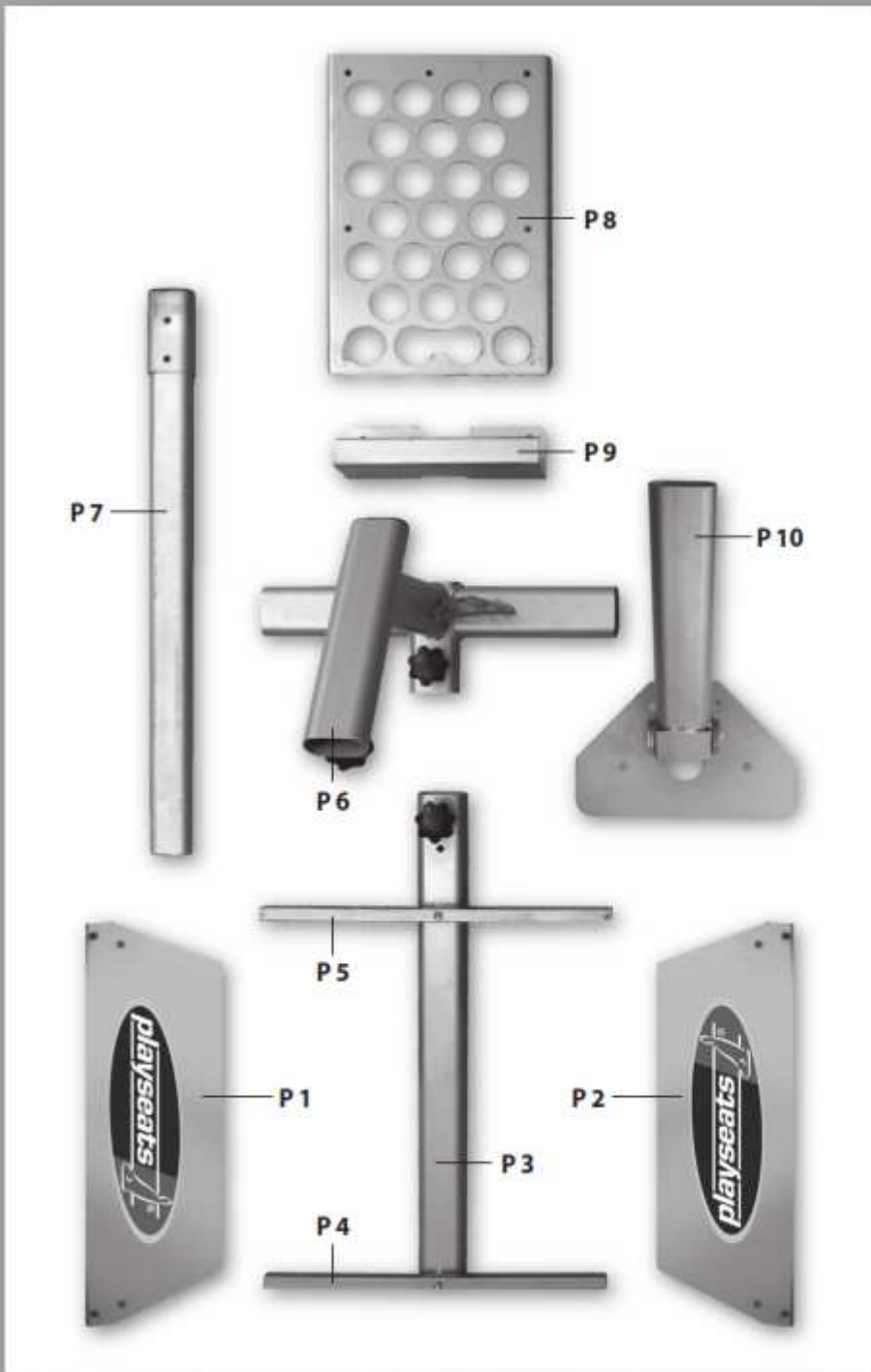
**[www.playseats.com](http://www.playseats.com)**

Need Help? Email: [info@boysstuff.co.uk](mailto:info@boysstuff.co.uk)  
Phone +44 (01676) 535557

Web: [www.boysstuff.co.uk](http://www.boysstuff.co.uk)



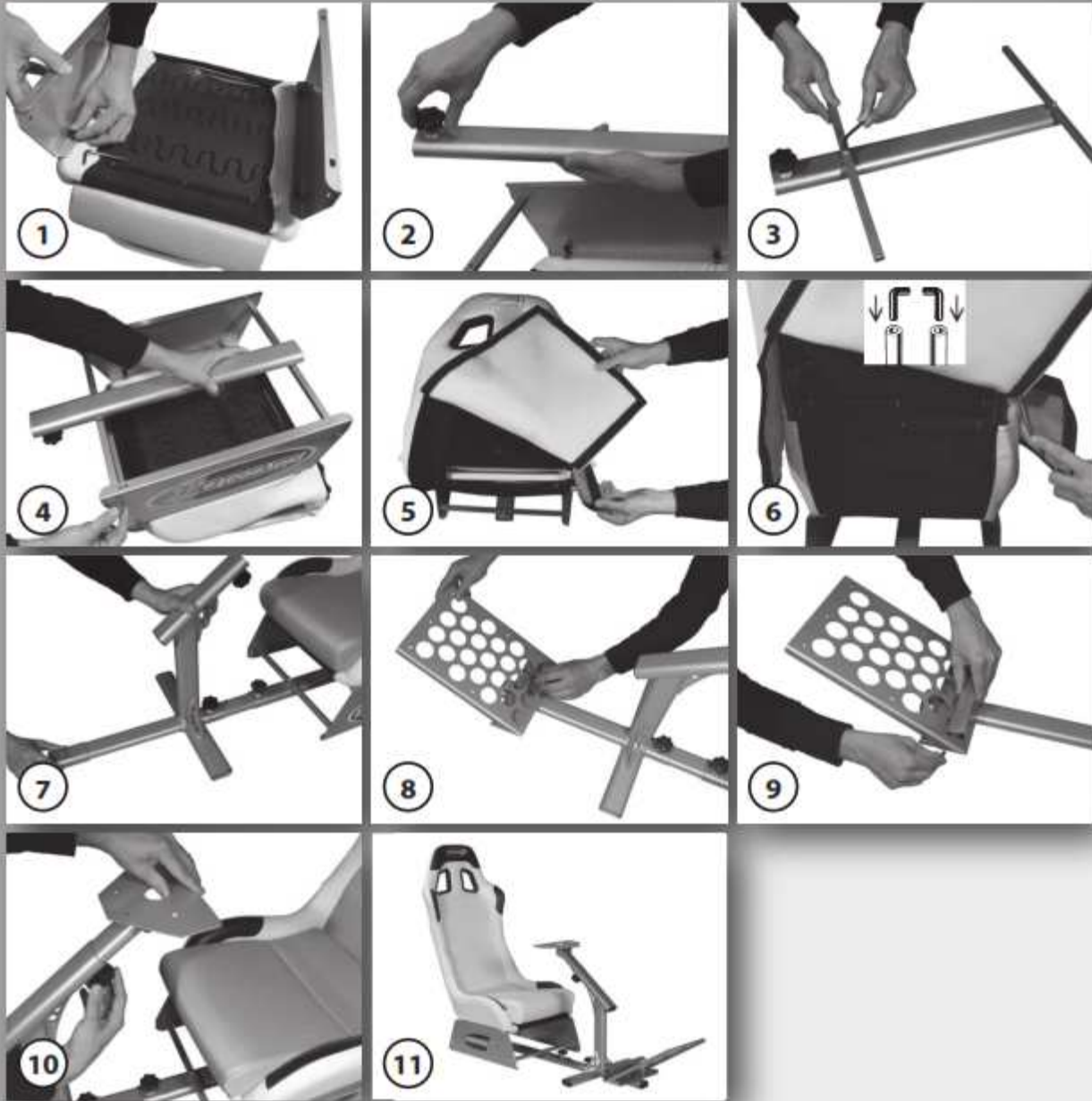
**BoysStuff.co.uk**  
serious fun



[www.playseats.com](http://www.playseats.com)



**BoysStuff.co.uk**  
serious fun



[www.playseats.com](http://www.playseats.com)

Need Help? Email: [info@boysstuff.co.uk](mailto:info@boysstuff.co.uk)  
Phone +44 (01676) 535557

Web: [www.boysstuff.co.uk](http://www.boysstuff.co.uk)



# 1



## ASSEMBLY INSTRUCTION FOR THE PLAYSEAT EVOLUTION

### Safety instruction: the Playseat is not included or suitable for use in cars!

1. First you need to assemble the chair frame supporting the chair by attaching plates P1 & P2 to the bottom of the chair (**photo 1**) using the Allen screws ①. You will find these screws already attached to the bottom of the chair.

Take the oval tube P3 (**photo 2**) and turn the adjustment knob ② a few times so it is secured in the large screw thread at the front. Then attach the two long square bars P4 & P5 to the oval tube (**photo 3**) using the Allen screws ③.

After this, attach the section you have just assembled to the bottom of the chair between the side plates. Take care when assembling the section to ensure that the adjustment knob is at the front of the chair (**photo 4**). Use the Allen screws for this ④.

The chair can now be folded out and secured. If the chair has sprung open the backrest can be secured using the two locking pins in the backrest. In order to do this you need to first turn the chair over and rest it on the floor. Then you need to pull the cover up from the rear of the chair (**photo 5**) and pull up the backrest. (**photo 6**).

The locking pins can now be pushed in firmly. Finally, pull the cover back down and secure it using the Velcro strips.

2. The next step is to assemble the frame for the steering wheel and pedals. Take the steering column P6 and the oval tube P7. Push the oval tube through the steering column and into the tube beneath the chair (**photo 7**) and tighten the adjustment knobs in both the steering column and the oval tube.
3. The pedal plate P8 can now be attached to the oval tube (**photo 8**). Two Allen screws ④ need to be used for this. This pedal plate can be installed in two different positions. The middle position is always used as the standard position, however with some pedals it is good to position the pedal plate so it is slightly off-centre to the left. An additional support P9 is provided to ensure optimal control over the pedals. This may be attached to the bottom of the pedal plate (**photo 9**) using two Allen screws ④.
4. Finally, insert the pre-assembled steering plate & steering rod P10 into the steering column (**photo 10**). You can then tighten the adjustment knob gently.

Your racing cockpit is now ready for you to attach your own steering wheel and pedals using the universal fasteners provided. Most steering wheels and pedals can be attached using the special Velcro strips which can be stuck to the frame. Some steering wheels and pedals can even be attached with small bolts.